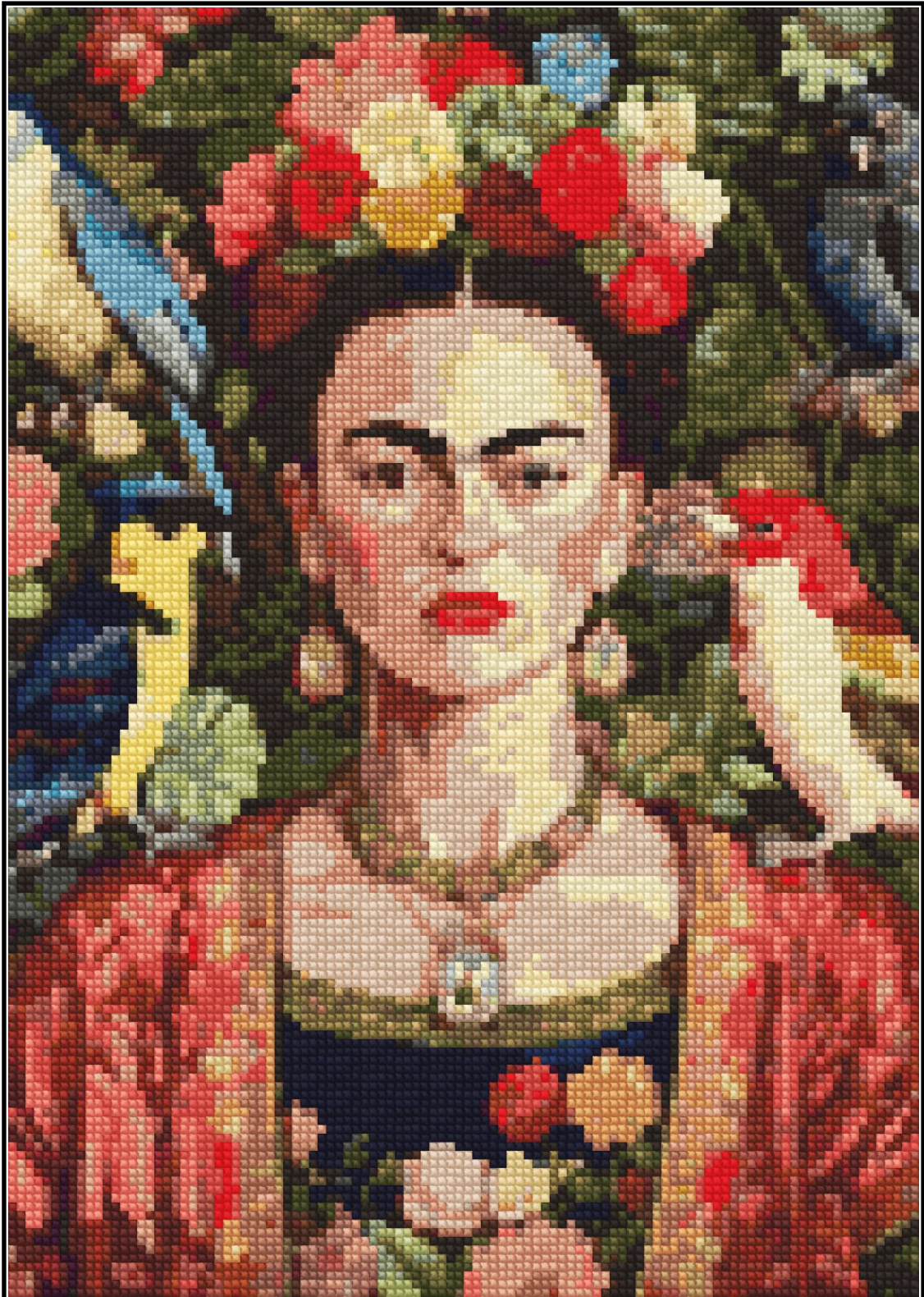


# Cross stitch pattern

Chart in 44 DMC colors on 14 count Aida  
Finished size: 7.57" x 10.71" or 19.2 x 27.2 cm  
Stitch count: 106 x 150



# Symbol Key

Assumes Aida 14 count and DMC colors

#	Symbol	Code	Strands	Yards	Skeins
1		3371	2	16.00	2.00
2		543	2	9.25	1.25
3		3771	2	9.25	1.25
4		936	2	7.50	1.00
5		939	2	5.25	0.75
6		351	2	5.00	0.75
7		352	2	4.75	0.75
8		3064	2	4.50	0.50
9		3011	2	4.25	0.50
10		918	2	4.00	0.50
11		3857	2	4.00	0.50
12		746	2	3.75	0.50
13		919	2	3.75	0.50
14		898	2	3.50	0.50
15		3823	2	3.50	0.50
16		677	2	3.25	0.50
17		356	2	2.75	0.50
18		920	2	2.75	0.50
19		3012	2	2.75	0.50
20		606	2	2.75	0.50
21		3827	2	2.75	0.50
22		611	2	2.50	0.50

#	Symbol	Code	Strands	Yards	Skeins
23		422	2	2.25	0.25
24		370	2	2.25	0.25
25		523	2	2.00	0.25
26		535	2	2.00	0.25
27		3772	2	2.00	0.25
28		433	2	1.50	0.25
29		727	2	1.50	0.25
30		16	2	1.50	0.25
31		519	2	1.50	0.25
32		648	2	1.25	0.25
33		414	2	1.25	0.25
34		842	2	1.25	0.25
35		3750	2	1.25	0.25
36		407	2	1.25	0.25
37		07	2	1.25	0.25
38		154	2	1.25	0.25
39		14	2	1.00	0.25
40		3820	2	1.00	0.25
41		336	2	1.00	0.25
42		3777	2	1.00	0.25
43		3072	2	0.75	0.25
44		518	2	0.50	0.25

